

Windows 7 Embedded Demo Image Installation Guide

Support devices:

EBOX-333x, 336x, DIN PC-333x, 336x and EBOX-335xDX3 Series.

Preparation:

A. BIOS setting for EBOX-333x, 336x, DIN PC-333x, 336x Series:

ACPI Configuration = Yes.

IDE Operate Mode = Legacy mode.

Note:

A. EBOX-335xDX3 Series doesn't need to do the BIOS setting.

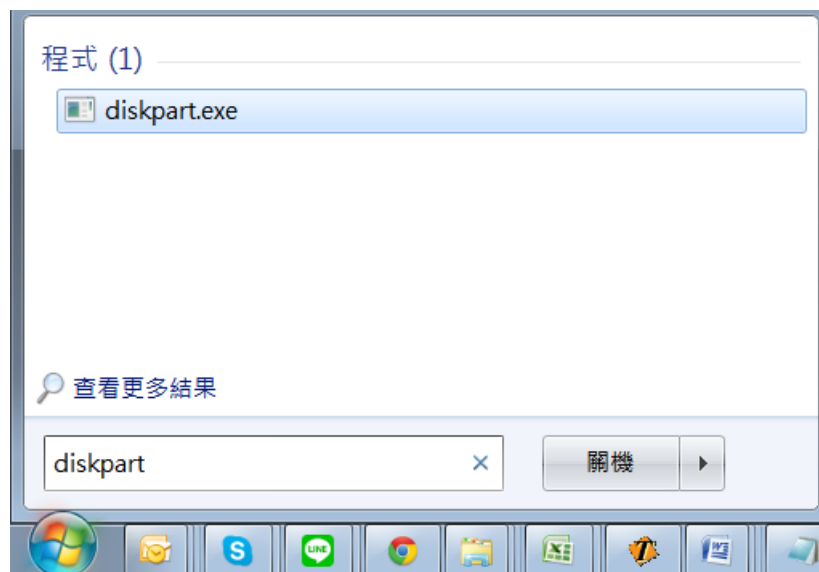
B. Be sure the boot up storage is with at least 8GB capacity or above.

1. Make the UFD Bootable for Windows 7 Embedded demo installation:

Partition and format your UFD so that it can be used as a bootable disk.

1-1. From a Windows 7 or Windows 7 embedded standard environment, run the DiskPart tool.

For example, at the command prompt, type **diskpart**.



1-2. Use the DiskPart tool to determine the disk number and device size that you want to use for the next step by typing the following at the DiskPart command prompt: **list disk**

```
DISKPART> list disk

磁碟 ### 狀態          大小    可用    Dyn  Gpt
-----
磁碟 0    連線            465 GB    0 B
磁碟 1    連線            14 GB     0 B
磁碟 2    連線            14 GB     0 B

DISKPART>
```

1-3. Use the DiskPart tool to partition and format the device then make it bootable by typing the following, replacing <disk_number> with the number of the disk to partition and format:

select disk <disk_number> example **select disk 2**

```
DISKPART> select disk 2
磁碟 2 是所選擇的磁碟。
DISKPART> _
```

1-4. (Optional) If the disk is offline, type the following at the DiskPart command prompt to bring the disk online. If the disk is already online, you can skip this command.

online disk

1-5. Type the following commands at the DiskPart command prompt, replacing <device_size> with the capacity of the UFD (in MB).

1-6. **clean**

1-7. **create partition primary size=<device_size>** example **create partition primary size=3072**

```
DISKPART> clean
DiskPart 成功地清理了磁碟。
DISKPART> create partition primary size=3072
DiskPart 成功地建立了指定的磁碟分割。
```

1-8. **select partition 1**

1-9. **active**

1-10. **format fs=ntfs quick**

```
DISKPART> select partition 1
磁碟分割 1 是所選擇的磁碟分割。
DISKPART> active
DiskPart 已標記目前的磁碟分割為使用中。
DISKPART> format fs=ntfs quick
100 % 已完成
DiskPart 已順利格式化磁碟區。
DISKPART>
```

1-11. assign

1-12. exit

```
DISKPART> assign  
DiskPart 成功地指派了磁碟機代號或掛接點。  
DISKPART> exit
```

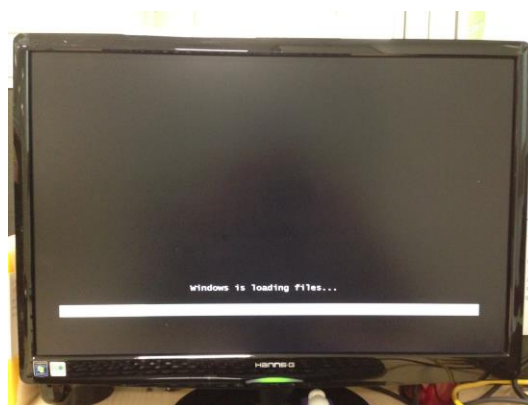
The UFD is now bootable.

2. Extract the Windows 7 embedded Demo Image ZIP file (from DMP website) and copy the following files onto USB mass storage to become the demo OS USB installer.



Plug the demo OS USB installer into EBOX or DIN PC unit.

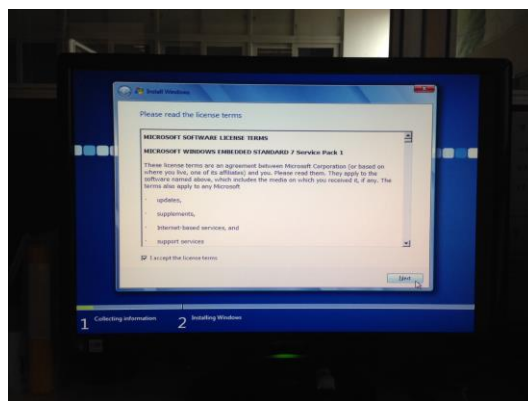
3-1. Turn on unit power, and system will start to load the files.



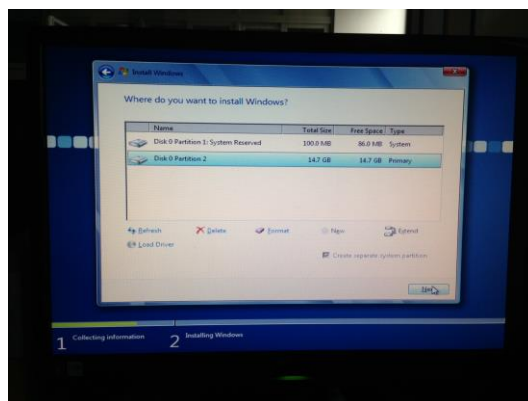
3-2. Message "Setup is starting..." will pop out.



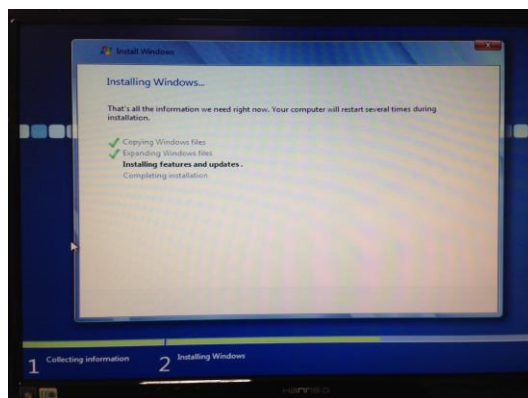
3-3. Click "I accept the license term" for next step.



3-4. Select the partition or create new one to install Windows 7 embedded demo OS.



3-5. Then system will start to install (Here will take about 45 minutes).



3-6. After demo OS installed, system will reboot for the first time.

Please remove the USB installer at the same time, otherwise the installation process above will repeat again. (The first boot will take 45 minutes).

3-7. After the first boot, system will show the desktop then the Installation completed.

4. After Demo OS installed, install the xplay for audio player download [here](#).

Note:

1. User will be asked to enter trial product key during the installation process.

If skip without entering product key, user can get 30 days trial period for evaluation after first boot.

After 30 days, the device will restart every twenty minutes without warning.

2. Below Evaluation Runtime Key can be applied at Microsoft official website.

User may enter the Key and extend trial period to 180 days.

GJVTR-C4WQ6-BKRH3-DRFFH-J83DM