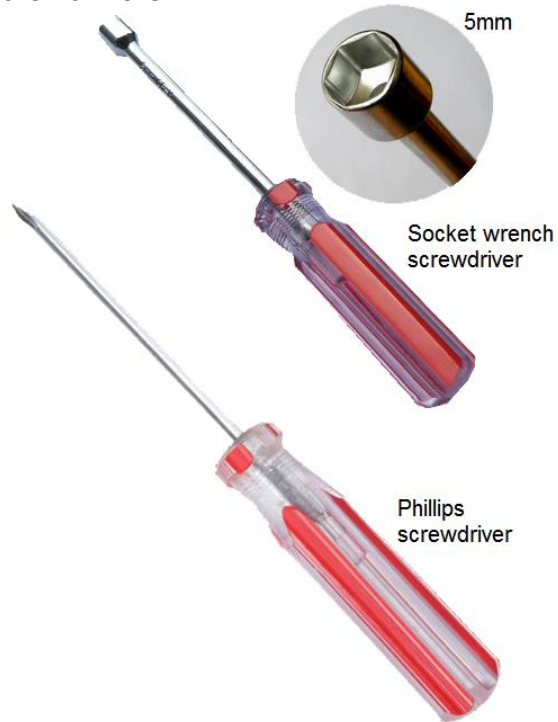


# How to install 2.5" SATA HDD into EBOX VESA PC

1. Prepare the following items:

A. Screwdrivers.



B. 2.5" SATA HDD and SATA cable.



2. Unscrew four screws from the bottom of EBOX unit.



3. Unscrew two screws next to the VGA port at rear side.



4. Remove EBOX upper cover.



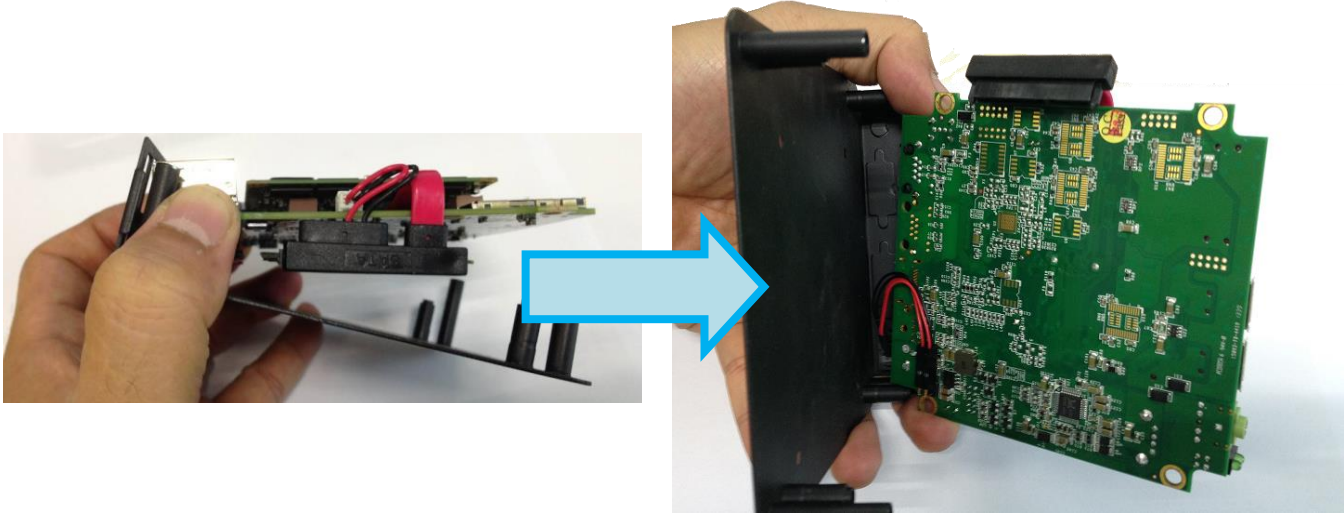
5. Remove the U type front cover.



6. After above 5 steps, the EBOX unit is disassembled as below.



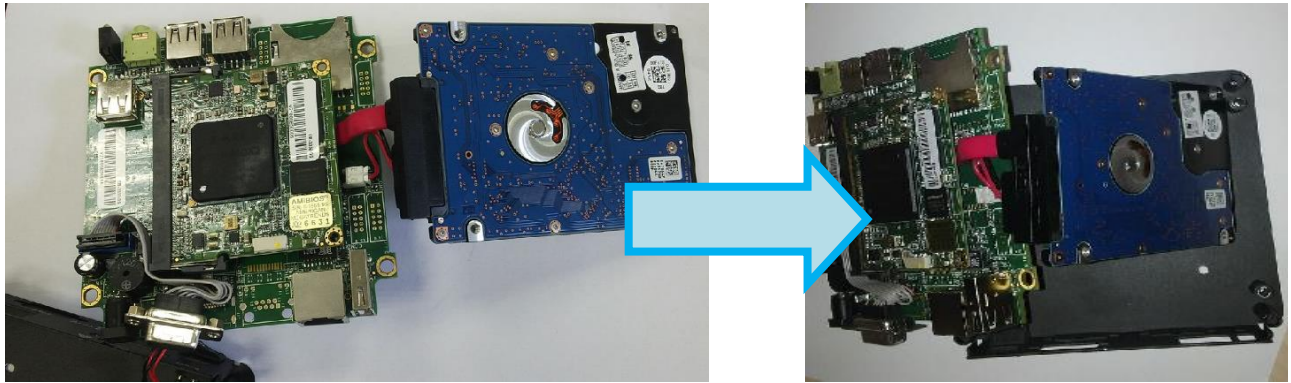
7. Taking apart the main board from EBOX bottom base case.



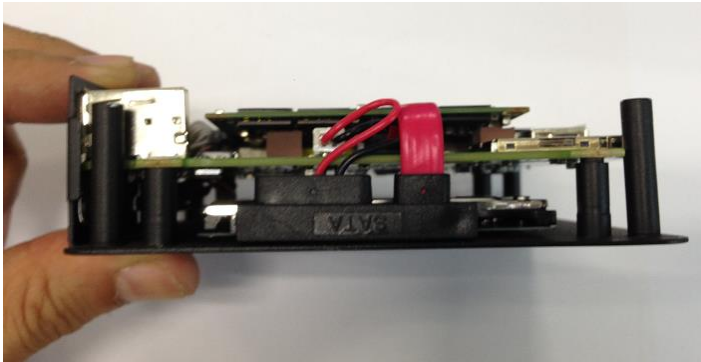
8. Connecting the SATA Cable to the cable connector and HDD power cable on the mainboard.



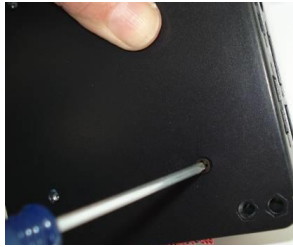
9. Bending the SATA cable and put the 2.5" SATA HDD under the main board.



10 . Side look of the EBOX after main board fixed to the bottom base case.



10. Use four small black screws from EBOX package bag to secure the 2.5" SATA HDD.



11. Tighten four screws with EBOX upper cover to complete the installation.

